

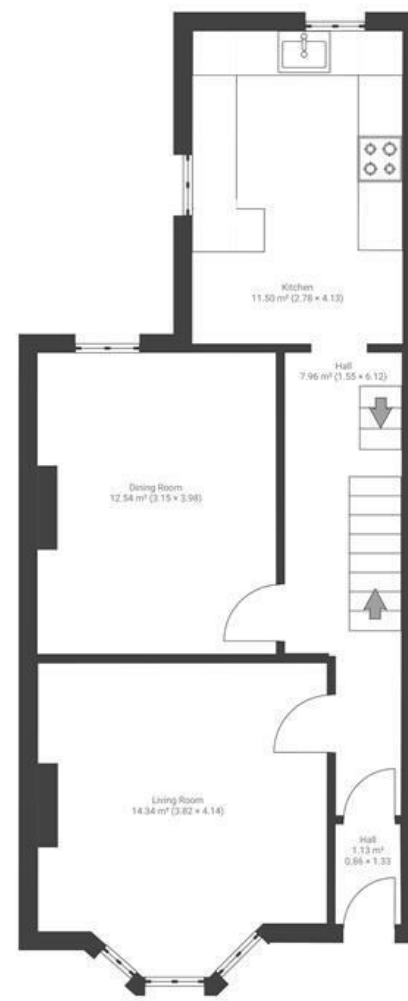
# St. Andrews Road

## MONTPELIER

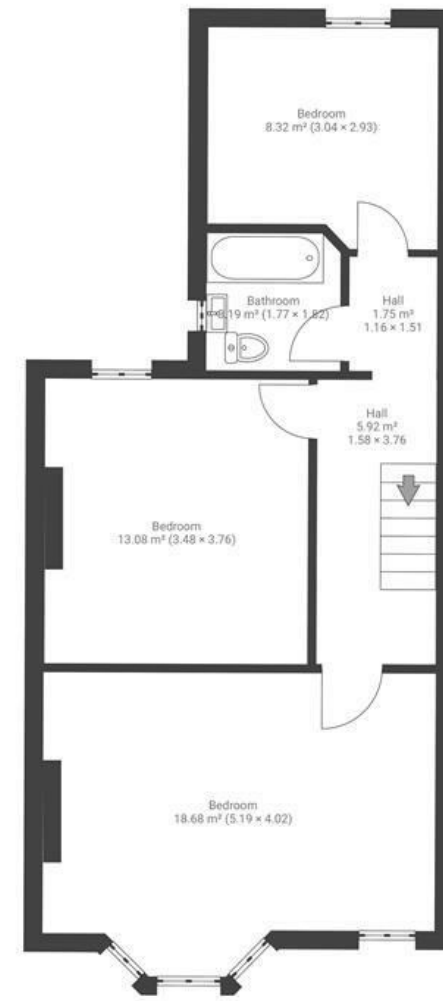
APPROXIMATE FLOOR AREA  
148 SQM / 1596 SQFT



LOWER GROUND FLOOR



GROUND FLOOR



FIRST FLOOR

**Boardwalk**

# St. Andrews

MONTPELIER, BRISTOL



£675,000



3 Bedrooms



BS6 5EL



2 Bathrooms

*"Being at the end of a cul-de-sac has been fantastic; we have some wonderful views out from the Kitchen and are surrounded by plenty of wildlife."*

